

11th Undergraduate Conference in Medieval & Early Modern Studies



Moravian College
December 3, 2016

Schedule

8:30-9:15 On-site Registration

Atrium, Priscilla Payne Hurd Academic Complex (PPHAC; see map on inside back cover)

9:15-9:30 Opening Remarks by Dr. Jim Skalnik

Prosser Auditorium, Hauptert Union Building (HUB)

9:40-10:35 Session I

PPHAC

10:45-11:40 Session II

PPHAC

11:45-12:40 Lunch & Demonstrations

HUB or local restaurants (on your own!)

Demonstrations by exhibitors will be held in PPHAC and the HUB during this time.

12:50-1:45 Plenary Session: Dr. Heide Estes (Monmouth University)

“Beowulf and the Sea”

Prosser Auditorium, Hauptert Union Building

2:00-2:55 Session III

PPHAC

3:05-4:00 Session IV

PPHAC

4:00-4:30 Reception

PPHAC Atrium

5:00-7:00 *Everyman on Trial*, performed by the Moravian College Theater Company (free for conference registrants — tickets and maps available at registration)

Trinity Episcopal Church, 44 E. Market St, Bethlehem

7:00-8:00 Boar’s Head Procession & Reception

Trinity Episcopal Church

Program

Session I, 9:40-10:35

Saints

PPHAC 101

Moderator: Cynthia Kosso (Moravian College)

Ali Preston (Lycoming College): “Transgender Saints and Transcending Gender”

Max Kraft (Moravian College): “Heroes, Saints, Soldiers of God: The Christianization of the Anglo-Saxon Hero Figure”

Rebecca Smith (Hartwick College): “A Reconsideration on Giovanni Bellini’s ‘St. Francis in the Desert’”

Material Culture I

PPHAC 116

Moderator: Jenifer Branton-Desris (Moravian College)

Joseph Woods (Iona College): “The Skin We’re In: The Importance of the Manuscript in Anglo-Saxon Literature”

Esther Wetzel (University of Missouri-Kansas City): “Nostalgia and its Influence in Anglo-Saxon Literature and Law: From Gift-Giving Ring Bearers to Written and Verbal Oaths”

Megan McDermott (Neumann University): “Rings, Carts, and Hobbits: Chivalric Symbolism and Celtic Connections in Chretien de Troyes’ *Le Chevalier de la Charette* and J.R.R. Tolkien’s *The Lord of the Rings*”

Representation Wrestles Reality

PPHAC 117

Moderator: Dominic Longo (Monmouth University)

Brynn Mugnolo (Ithaca College): “Cruel Beauty: Redefining Virtue in ‘The Flaying of Marsyas’”

Anna Doren (Hartwick College): “‘Majesty and Modesty in Equal Measure’: The Creation of Queen Elizabeth I of England’s Image in the Early Years of Her Reign”

Brittany Sloan (Hartwick College): “Robin Hood: The Hero Unveiled”

Representations of the Other

PPHAC 232

Moderator: Sandra Aguilar-Rodriguez (Moravian College)

London Stever (Albright College): “Persecution in Absence: A Brief Introduction to Medieval Scandinavian Perceptions of the Jewish People”

Shayna Miller (Drew University): “‘Which is the merchant here, and which is the Jew?’: Depictions of Identity and Religious Anxiety in the *Nuremberg Chronicle* and *The Merchant of Venice*”

Steven Underwood (Centenary University): “The White Lens: *Othello*’s Big Black Problem”

Women’s Voices and Performances

PPHAC 233

Moderator: Martha Reid (Moravian College)

Lauren Rosenblatt (Columbus State University): “Painted Faces & Printed Music: Music Manuscripts in the Paintings of Bartolomeo Veneto and Sebastiano Florigero”

Sofia Berry (Russell Sage College): “The Divine Heavenly Sound: The Significance of Musical Expression and Secret Language for Hildegard of Bingen”

Leslie Smith (University of Montevallo): “‘Screams into the Void’: Female Voices in *The Book of Margery Kempe* and Arthurian Legend”

Lays, Lais, and Innuendos in Chaucer and Beyond

PPHAC 235

Moderator: Jean-Pierre Lalande (Moravian College)

Dana Ruby (Iona College): “The Effect of Arrogant Control in *The Canterbury Tales* and the *Lais* of Marie de France”

Jessica Pereira (Quinnipiac University): “What Chaucer’s Use of the Breton Lai Tells Us about Decision Making & Selfhood in *The Franklin’s Tale*”

Alyssa Burger (Lycoming College): “Sexual Innuendos of Chaucer: Overt and Abstract”

Session I (cont.)

Medieval Imaginations: Papers from Moravian College First-Year Writing Seminar

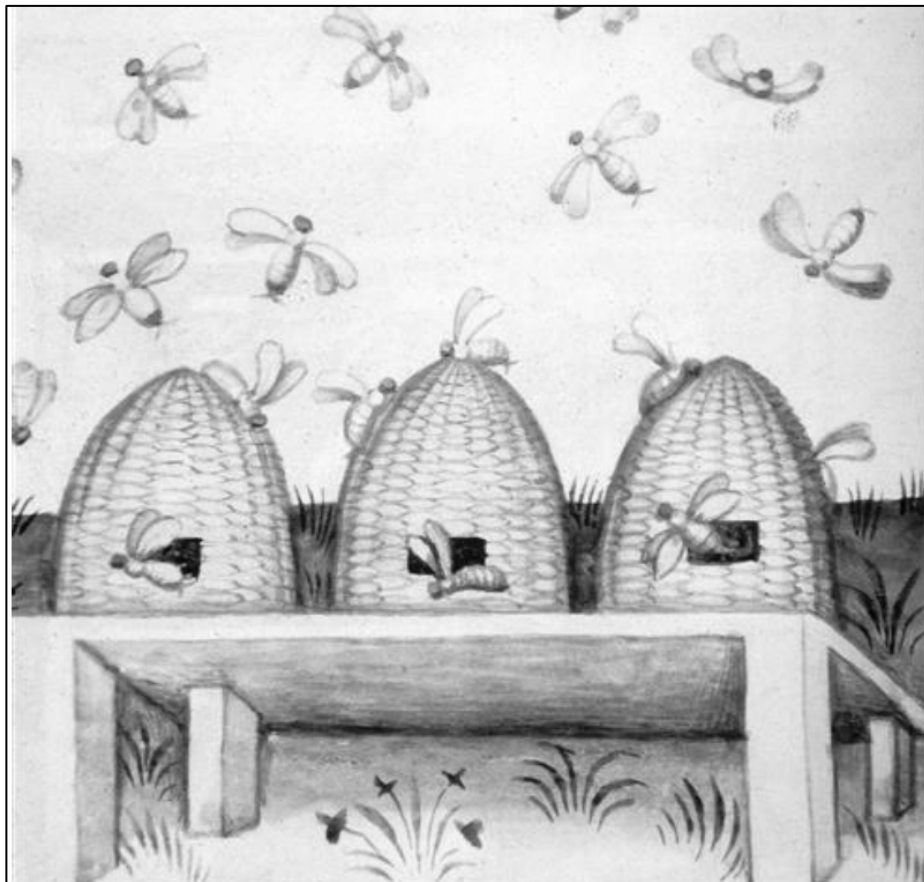
PPHAC 330

Moderator: Dana Wilson (Moravian College)

Emily Houser (Moravian College): “‘The Husband’s Message’ and ‘The Wife’s Lament’: A Comparison”

Richard Roman (Moravian College): “Comparing and Contrasting Lovers: ‘The Wife’s Lament’ and ‘The Husband’s Message’

Bridget Seche (Moravian College): “Beowulf and St. Brendan as Warrior Figures”



Tacuinum sanitatis, Codex Vindobonensis, Autriche, Vienne, Österreichischen Nationalbibliothek. c. 1370-1400,

Session II, 10:45-11:40

Paganism & Conversion

PPHAC 116

Moderator: Max Kraft (Moravian College)

Sean Dowd (St. John's University): "The Crosses of the Isle of Man: Twilight of the Norse Gods"

Samantha Chovanec (Lycoming College): "A Fearful Charlemagne: The Mission to Convert the Saxons"

Sarah Kinkade (Lesley University): "Remnants of the Past: Wealhtheow and Grendel's Mother"

Material Culture II

PPHAC 117

Moderator: Dominic Longo (Monmouth University)

Morgan McMinn (West Virginia University): "Saye No More: Material Culture in the Court of Chancery"

Alexis Rose Anderson-Fosco (Penn State University): "Reconstructing the Image of a Viking Woman"

Laurence Bond (CUNY-Brooklyn College): "Holy Rooms: Ritual Experience and the Multivalent Functions of Domestic Space in the Late Middle Ages"



Session II (cont.)

Queer Theory

PPHAC 232

Moderator: Dana Wilson (Moravian College)

Zachary Clifton (University of Montevallo): “‘Just the Tip’: Holy Phalluses and Queer Beheadings in Medieval Romance”

Laura Todd (Neumann University): “Looking Through Philters”

Erin Corah (Hartwick College): “‘I am not as I play’: Gender and Sexuality in *Twelfth Night*”

Madness & Manipulation in Shakespeare

PPHAC 233

Moderator: Ashley Frick (Moravian College)

Kathleen Zachok (Centenary University): “Grief in *King Lear*: The Effect of Character Flaws and of Circumstances Beyond Control”

Kelly Perdue (Neumann University): “Iago’s Motive or Lack of Motive in *Othello*: Comparison of Two Scholars’ Interpretations”

Rachael Diamond (Centenary University): “Hysteria v. Supernatural”

Love

PPHAC 235

Moderator: Anne Reid (Moravian College)

Joshua Reynolds (Neumann University): “Why Does Love Always Lead to Death?”

Alicia Ezekiel-Pipkin (Saint Joseph’s University): “Sex and Tears: A Woman’s Strive for Authoritative Power in the Middle Ages”

Ali Junkins (University of Montevallo): “‘Love Me, Daughter, as a Good Wife’: Complicating the Father’s Love in *The Book of Margery Kempe*”

Creating Gender

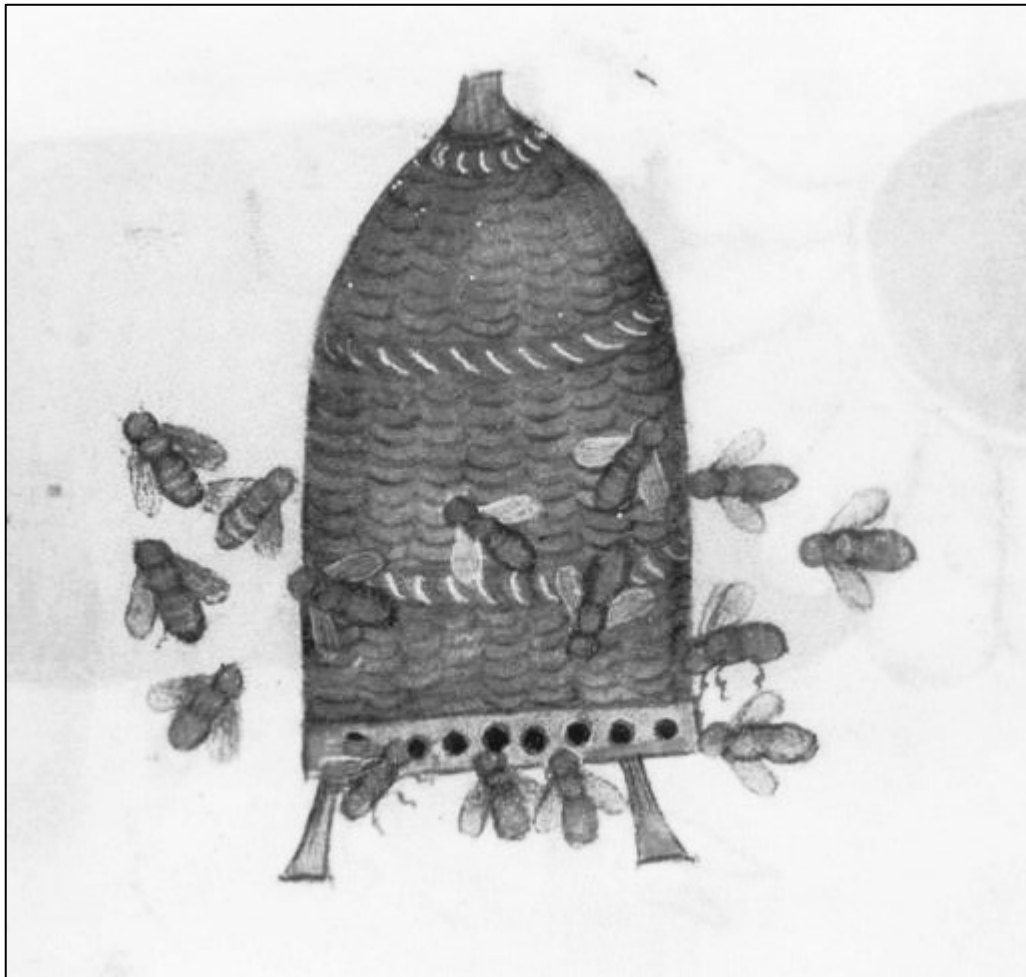
PPHAC 330

Moderator: Belinda Waller-Peterson (Moravian College)

Amy Halfinger (Centenary University): “Female Reputation in *Much Ado About Nothing*”

Paige Szmodis (Ursinus College): “Reconstructing Christine de Pizan’s *City of Ladies*”

Jonathen Muñoz (Centenary University): “From *Beowulf* to ‘Brosé’: Masculine Performance and the Human Experience”



Bees in the Luttrell Psalter, British Library Add. MS 42130, c. 1325-1340

11:45-12:40 Lunch & Demonstrations

12 noon Faculty Lunch (Laros Room, HUB)

You may eat at Moravian's food court or at local restaurants.

Demonstrations by exhibitors will be held during this time.

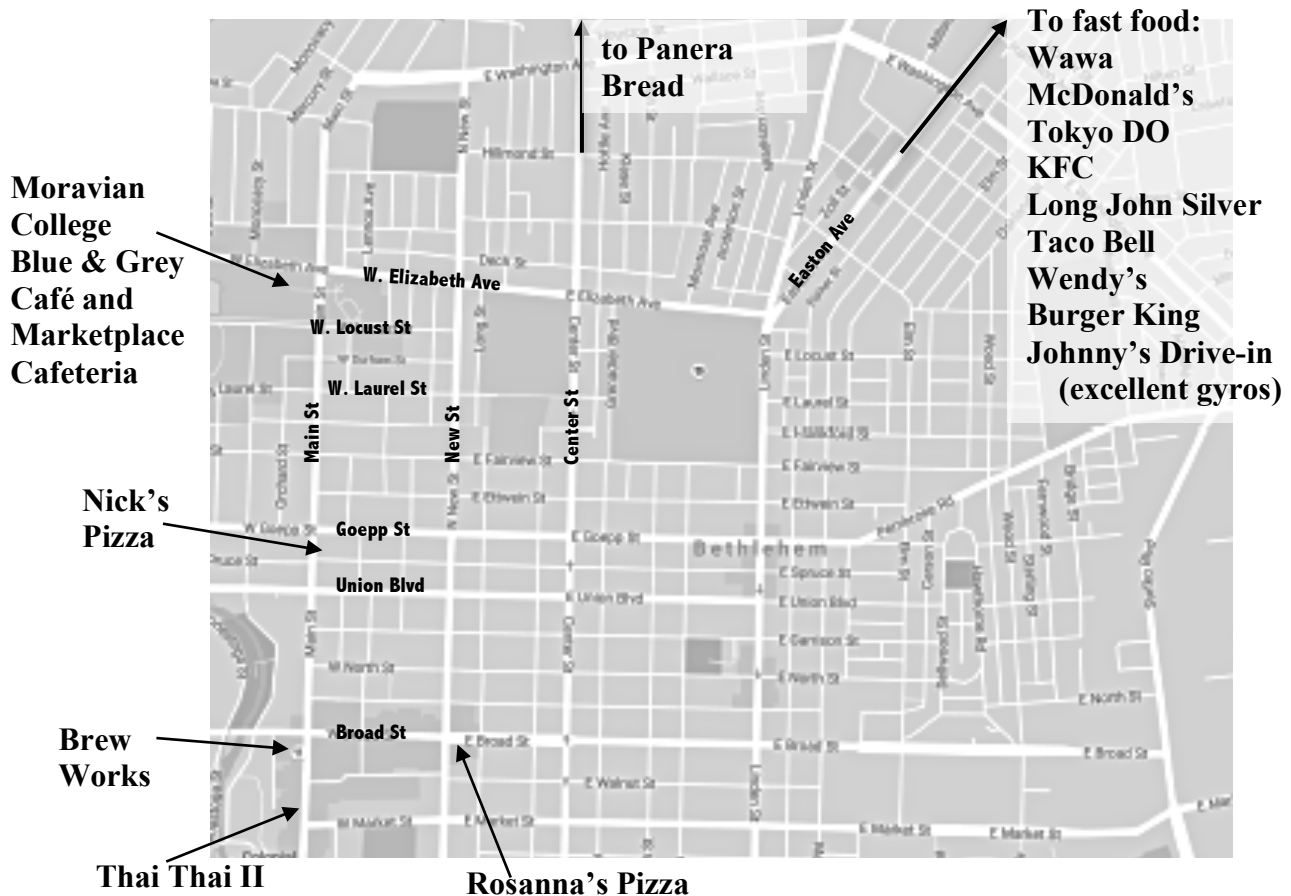
Lunch Options

In walking distance:

- ❖ Moravian's **Marketplace Cafeteria** in the HUB offers an "all you can eat" buffet.
- ❖ The **Blue & Grey Café** in the HUB has salads, sandwiches, yoghurts, etc.
- ❖ **Nick's Pizza**, at 822 Main Street (in the direction of Downtown Bethlehem) makes pizza, calzones, salads, gyros, etc.

Fast food further afield:

- ❖ **Multiple fast food places** (McDonalds, KFC, Long John Silver, etc.) can be found on Easton Ave, about 2 miles away. From Moravian, take Elizabeth Avenue down to the High School, then make a wide left (as opposed to a sharp left) onto Easton Ave.
- ❖ **Panera Bread** bakery-cafe can be found a couple of miles up on Center Street, near Route 22. Take Elizabeth Avenue to Center Street, turn left, and follow it for about 2 miles. Panera is on the left just before you get to Route 22. Saturdays can be busy there: if you want to call ahead with your order, their number is (610) 866-9802.



Demonstrations

PPHAC & HUB

Medieval Textiles — Eva Mergen
Creative Fibers, Southampton, PA
PPHAC Atrium

Calligrapher — Linda Carol Gray
Lindacarolarts.com, Pipersville, PA
PPHAC Atrium

Poster Display — Members of Moravian College's Art 113 taught by
Professor Jan Ciganick
Eiffe Gallery, HUB

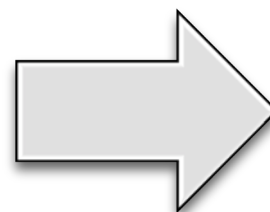
Weapons Demonstration — Chris Van Wickler
Massapequa, New York City
PPHAC Atrium

Medieval/Early Modern Book Sale — Moravian
College Bookstore in cooperation with Barnes & Noble
PPHAC Atrium

Conference Paraphernalia — Magnets, mugs, and ordering information
for t-shirts
PPHAC Atrium

Demonstration of Medieval & Early Modern Themed Board Games
— Moravian College Board Game Club
HUB

Except as noted, images illustrating this year's program come from the manuscript MS BL Royal 12 C XIX, fol. 45. England, c.1225. Creative Commons License, courtesy of the British Library.



12:50-1:45 Plenary Session

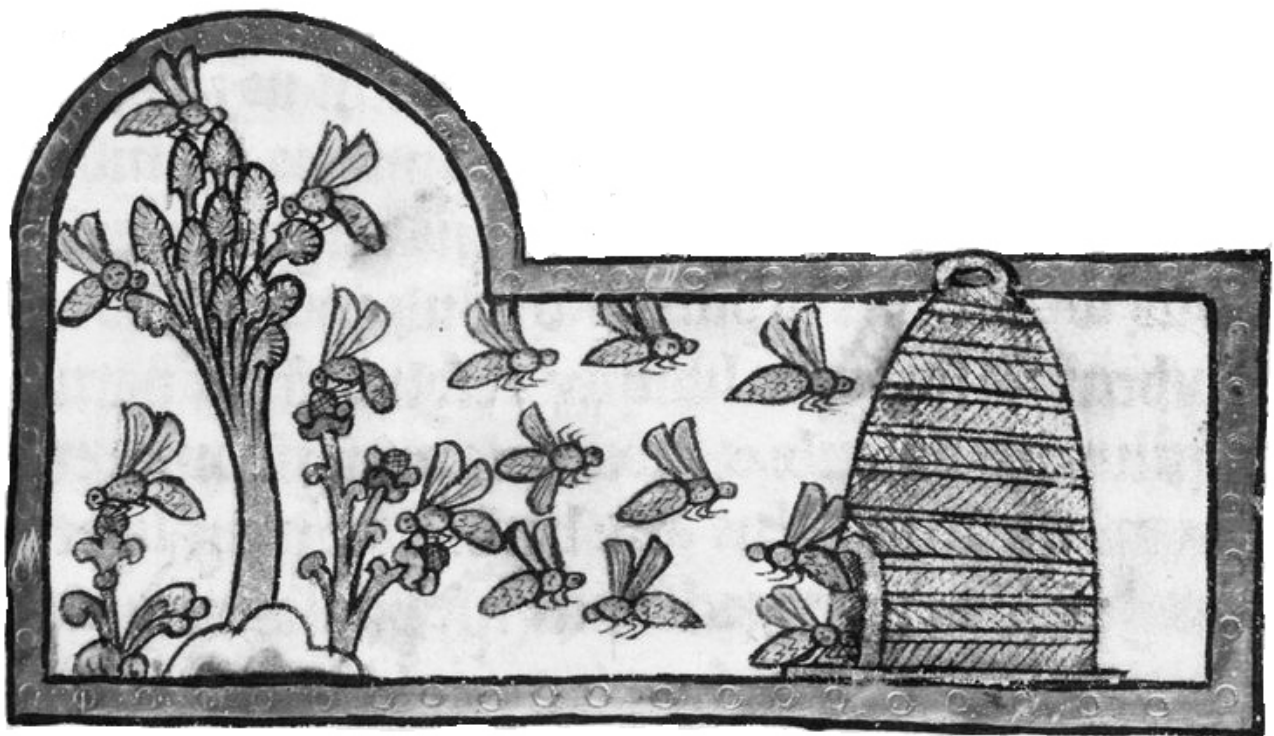
Prosser Auditorium, HUB

Dr. Heide Estes, Monmouth University

“Beowulf and the Sea”

Dr. Estes is Professor of English at Monmouth University. Her research involves Anglo-Saxon literature and ecocriticism.

Please stay for the entire Plenary Session, including the question and answer period. If the Plenary Session extends past 1:50 p.m., Session 3 will not begin until 10 minutes after the plenary has finished.



Session III, 2:00-2:55

Medieval Philosophy

PPHAC 101

Moderator: Bernie Cantens (Moravian College)

Laura Berkel (Kutztown University): “Recollecting our Universal Language”

Rebecca Schultz (Kutztown University): “Peter Abelard: The Theory of No Universals”

Levi Walbert (Kutztown University): “On the Oneness of the *Periphyseon*”

Modern Resonances I

PPHAC 116

Moderator: Maya Fustakgi (Moravian College)

Megan Stehman (Kutztown University): “Adaptation and Appropriation of Shakespeare’s Plays in the Modern Secondary Classroom”

Samantha Yates and Megan Mitchell (McDaniel College): “Reimagining *The Book of the Duchess*”

Christine Cha (Bucknell University): “Medieval Aesthetics and Modern Society: J.R.R. Tolkien’s Social Aesthetics”

Power and Reputation in the Canterbury Tales

PPHAC 117

Moderator: George Diamond (Moravian College)

Karli Burns (Binghamton University): “‘And They Feared Him as the Very Death’: Power, Fear, and the Apocalypse within the Reeve’s Character Portrait”

Chris Maze (Franklin & Marshall College): “Targeting the Elite: Chaucer’s Satirization of the Military in *The Canterbury Tales*”

Early Medieval Gender

PPHAC 232

Moderator: Theresa Dougal (Moravian College)

Joanna Wagner (Lycoming College): “Women in the Carolingian Empire and Muslim Iberia”

Lauren Talty (Iona College): “Masculinity and Femininity in Anglo-Saxon Culture”

Skylar Eidem (Moravian College): “From Wealhtheow to Guinevere: The Loss of Agency in Queenship from the Anglo-Saxon to Medieval Period”

Garrett Solomon (Albright College): “Shakespeare's Sense of Time: An Examination of Festival in *Twelfth Night*, and *Henry IV Pt. I*”

Violence and Abuse

PPHAC 233

Moderator: Casey Hilferty (Lehigh University)

Madeleine Bennett (Iona College): “*Beowulf* and *The Ruin*: Communal Bonding over Violence and Elegy”

Elana Weber (Binghamton University): “‘This Displeased Christ’: Rape in the First Crusade”

Sarah Newman (Iona College): “Power Division in Relationships”



Book of simple medicines (BNF Fr. 12321, fol. 152), mid-15th century

Session III (cont.)

Female Religious Practice

PPHAC 235

Moderator: Riddick Weber (Moravian Theological Seminary)

Lauren Holt (Binghamton University): “The Wrongfully Accused Prioress: Centuries of Misguided Criticism of Chaucer’s Prioress”

Kelly White (Saint Joseph’s University): “Men, Women and Food: The Gender and Power Dynamics of Anorexia Mirabilis”



Pierpont Morgan Library MS M.81, Fol. 58r. c. 1180-1190.

Session IV, 3:05-4:00

Early Modern Philosophy

PPHAC 101

Moderator: Bill Falla (Moravian College)

Arlene Amador (CUNY-Brooklyn College): “Sacrilegious Donne”

Cody Mayak (Kutztown University): “A Critique of David Hume’s Account of the Origin and Development of Religion”

Charlie Feher-Peiker (Hartwick College): “Hume’s Paradox”

Modern Resonances II

PPHAC 116

Moderator: Bob Mayer (Moravian College)

Keith Fallows (Neumann University): “*Hamlet* and Existentialism”

Arianne Evans (Bucknell University): “Tolkien and Medieval Sustainability”

Emanae Smith (Neumann University): “Courtly Love in *Sir Gawain and the Green Knight*, “The Reluctant Saint,” Chretien de Troyes’ *Romances*, and *Tristan and Iseult*”

Connecting Texts

PPHAC 117

Moderator: Meg Mikovits (Moravian College)

Elizabeth Giedraitis (Hartwick College): “*A Midsummer Night’s Dream* and the Mystery Plays”

Sarah Jaran (Lycoming College): “Literature’s Role During the Carolingian ‘Renaissance’”

Sanna Fogt (Lycoming College): “*Troilus and Criseyde* and *Romeo and Juliet*: A Comparative Study”

Kennae Gladney (Neumann University): “Lies and their Evolution to Acceptance”

Anglo-Saxon Wives

PPHAC 232

Moderator: Corey Wronski-Mayersak (McDaniel College)

Robyn Thum (Sarah Lawrence College): “*The Wife’s Lament*: A New Translation”

Dale Crawford (Centenary University): “Re-conceptualizing Anglo-Saxon Abandonment and Exile: *The Wife’s Lament*”

Christine Elizabeth Almassy (Lycoming College): “The Hidden Lives of Women”

Changing Interpretations

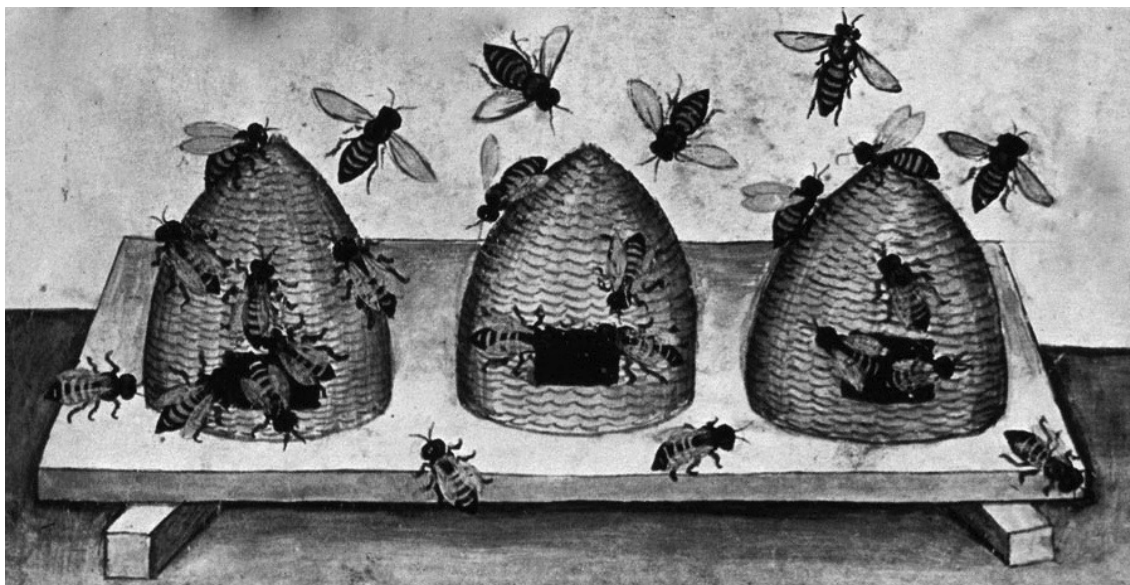
PPHAC 233

Moderator: Alison Holliday (Moravian College)

Patrick Graham (Neumann University): “Medieval Evil”

Richard Slaff (Hartwick College): “Commemorating the Italian Renaissance(?)”

Laura Cernik (Hartwick College): “Reality Outweighing Myth: The Legend of Prester John and its Effect on the Fifth Crusade”



Tacuinum sanitatis, Codex Vindobonensis, Autriche, Vienne, Österreichischen Nationalbibliothek. c. 1370-1400

Session IV (cont.)

Women and Power

PPHAC 235

Moderator: Joyce Hinnefeld (Moravian College)

Erica Stockman (Hartwick College): “‘I was a fierce warrior woman, to the limits of my strength’: Margaret of Beverly and the Roles of Women during the Crusades”

Channimuth Miller (Lycoming College): “Women, Freedom, and Power in Chaucerian Works”

Taylor Ruszczyk (Centenary University): “The Fearful Women of *King Lear*”

Jordan Walker (Bucknell University): “Malory’s Arthurian Women and Charles Taylor’s Theory of the Buffered and Porous Self”

Religion & Change

PPHAC 330

Moderator: Chris Jones (Moravian College)

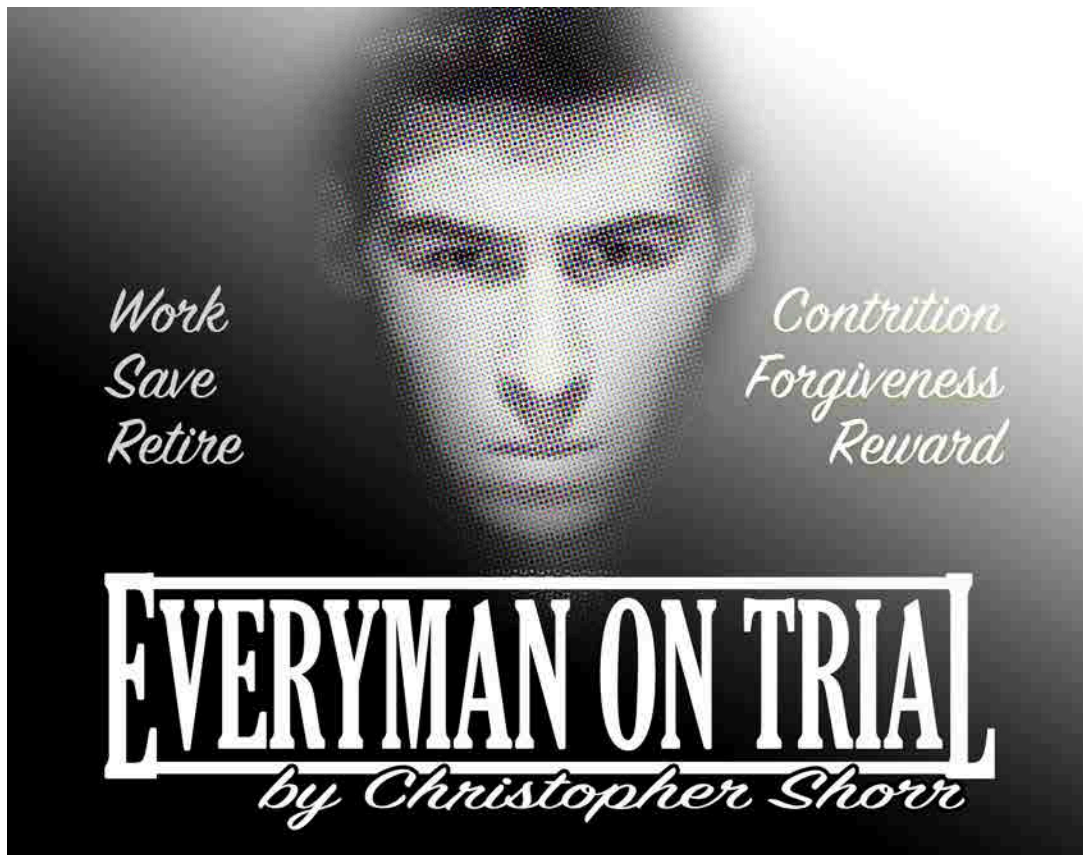
Aaron Trujillo (Albright College): “The Reconquista: Power-Hungry Kings, Sacred Spaces and Religious Identity”

Martin White (Binghamton University): “Wholly Unholy: Medieval and Modern Interpretations of Biblical Humor”

John Sprouse (Montgomery County Community College): “Martin Luther: Turning the World Upside Down”

Reception, 4:00-4:30

PPHAC Atrium



5:00-7:00 PM:

EVERYMAN ON TRIAL

**an original adaptation of the medieval play
performed by the
Moravian College Theater Company**

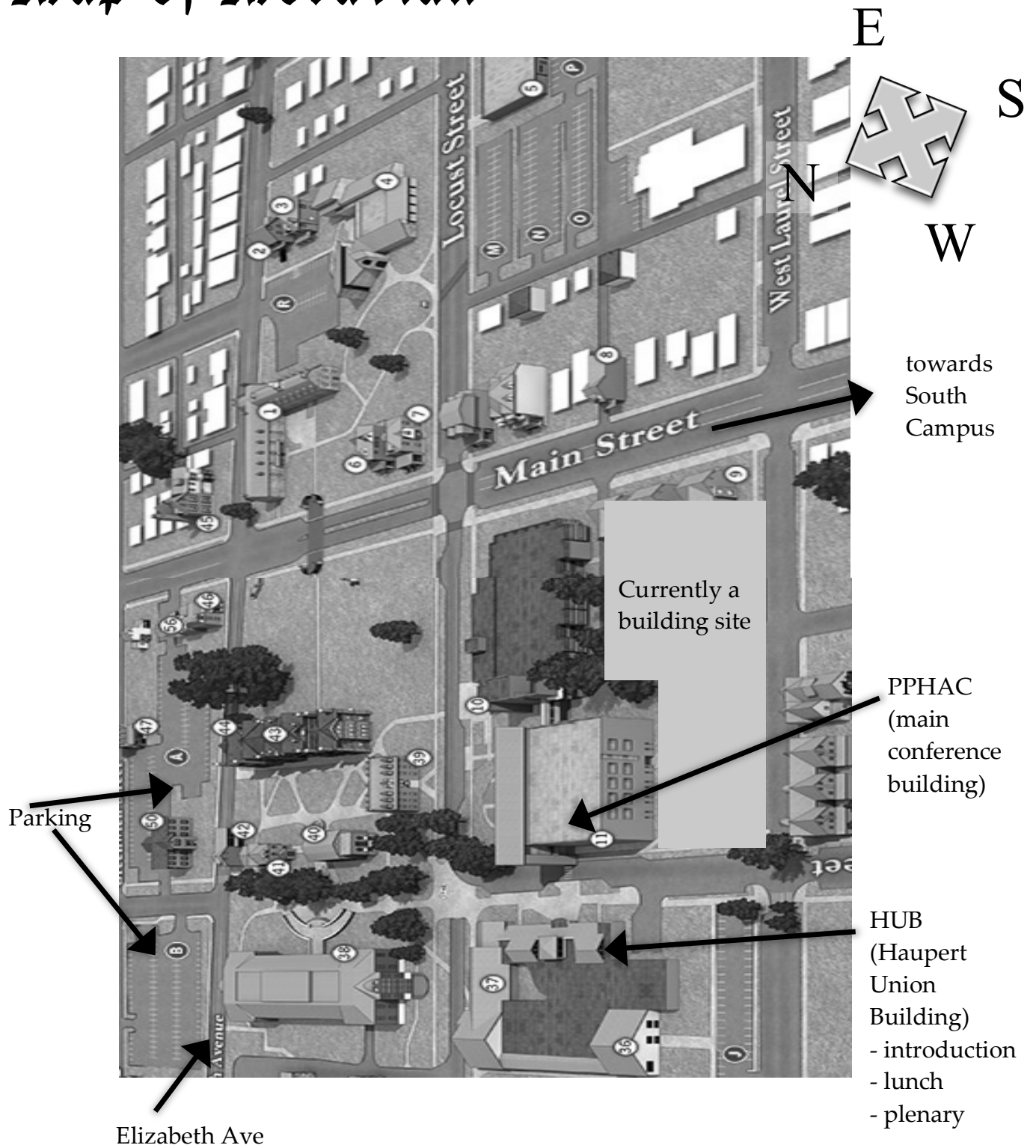
Moravian College presents the play *EVERYMAN ON TRIAL* by Christopher Shorr. This adaptation turns the late medieval Christian morality play into a biting critique of religious rigidity and contemporary money-focused society. The CEO of Everyman Bank is called to account for his life before the infamous High Judge, but when pressed, Everyman turns the tables on the court—calling into question the legitimacy of a system that he says perpetrates the same crimes of which he has been accused.

Trinity Episcopal Church, 44 E. Market Street, Bethlehem, PA 18018

(free for conference registrants — tickets and maps available at registration)

You are invited to stay for a “Boar’s Head” procession and yuletide reception following the performances.

Map of Moravian



We welcome faculty and students from the following colleges and universities:

Albright College	McDaniel College
Binghamton University	Monmouth University
Bucknell University	Montgomery County Community College
Centenary University	Neumann University
Columbus State University	Penn State University
CUNY Brooklyn College	Quinnipiac University
Drew University	Russell Sage College
Franklin & Marshall College	Sarah Lawrence College
Hartwick College	University of Missouri-Kansas City
Iona College	University of Montevallo
Ithaca College	Saint Joseph's University
Kutztown University	St. John's University
Lehigh University	Ursinus College
Lesley University	West Virginia University
Lycoming College	

Many thanks for funding and support to the Lehigh Valley Association of Independent Colleges (LVAIC); Moravian College's Provost's Office, President's Office, the Saudi Students Club, English Department, Facilities Services, History Department, Public Relations Office, Business Office, Media Services, Campus Police, Reeves Library, Dining Services, and CIT; and to Trinity Episcopal Church. Many thanks for assistance to: Jan Ciganick, Sarah Goletz, Christie Jacobsen, Lisa Johnson, Tracy Lakhram, Jim Skalnik, Craig Underwood, all those who generously prepared folders, moderated panels, and worked the registration desk, and many others! An especially big thank you to Skylar Eidem, for serving as the 2016 Conference Serf.

Moravian College encourages persons with disabilities to participate in its programs and activities. If you anticipate needing any type of accommodation or have questions about the physical access provided, please contact the event sponsors/organizers as soon as possible.

